

RES SQUARE lenses for LUXEON Rebel LEDs



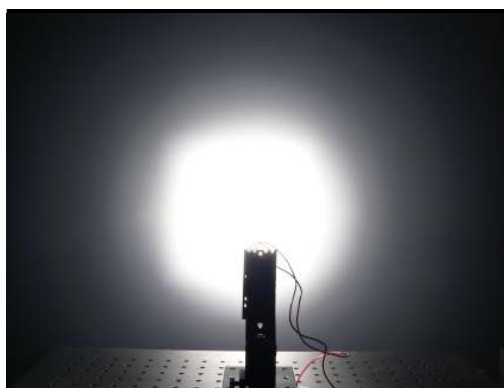
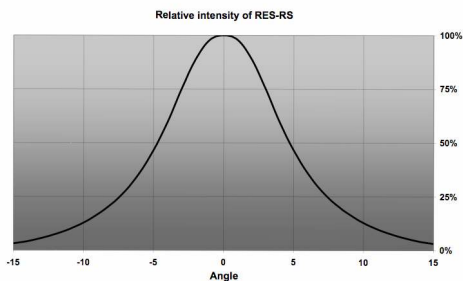
- Designed & optimized for Luxeon Rebel series of LEDs
- Lens material optical grade PC with high UV and temperature resistance (130°C/220°F). Allows use of high current and temperature conditions
- Best available optical efficiency, up to 90%, with an extremely good cutoff of light
- Integrated holder. Fastening to heat sink with a PU foam adhesive tape of automotive grade
- Compact dimensions 21.6 x 21.6 mm. Square form enables easy build of matrix without any gaps between lenses.

LENS TYPES

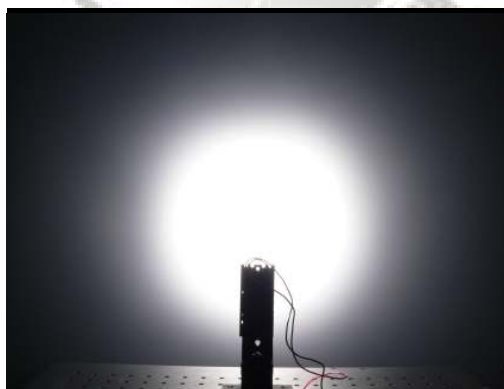
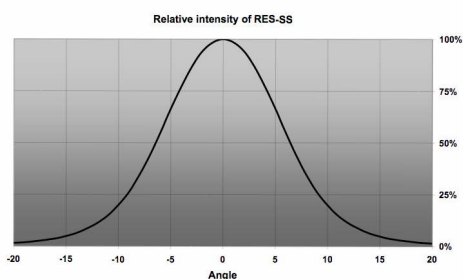
NAME	ORDERING CODE	FWHM Angle
RE SQUARE REAL SPOT	FA10856 RES-RS	±4°
RE SQUARE SMOOTH SPOT	FA10853 RES-SS	±6°
RE SQUARE DIFFUSER	FA10852 RES-D	±8°
RE SQUARE MEDIUM	FA10851 RES-M	±15°
RE SQUARE WIDE	FA10855 RES-W	±15.8°
RE SQUARE WIDE-V6	FA10903 RES-W-V6	±27°
RE SQUARE OVAL	FA10854 RES-O	±6° x ±23°

MEASUREMENTS

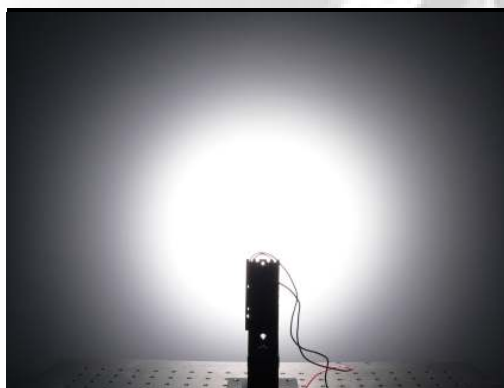
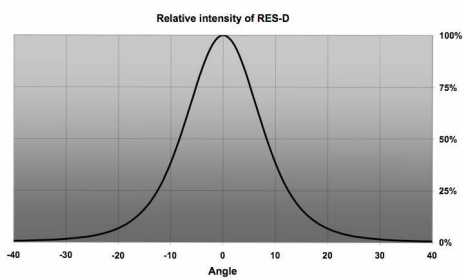
RES-RS



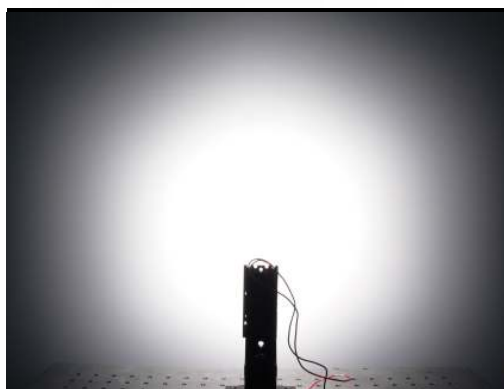
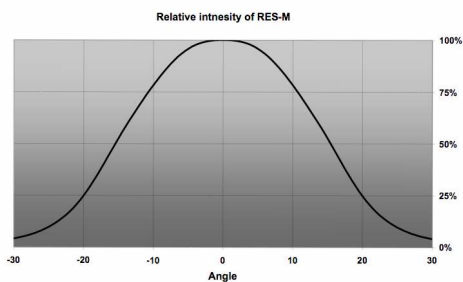
RES-SS



RES-D

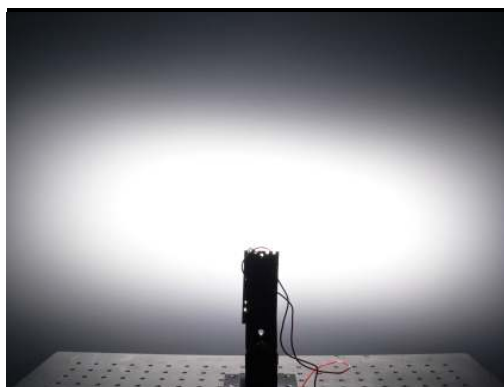
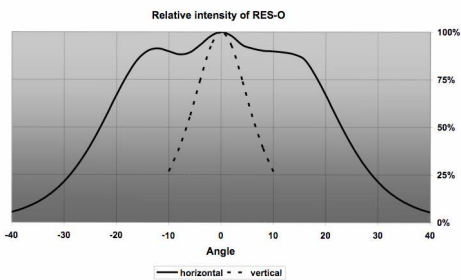


RES-M

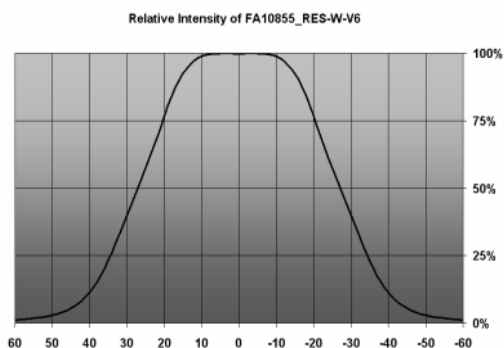
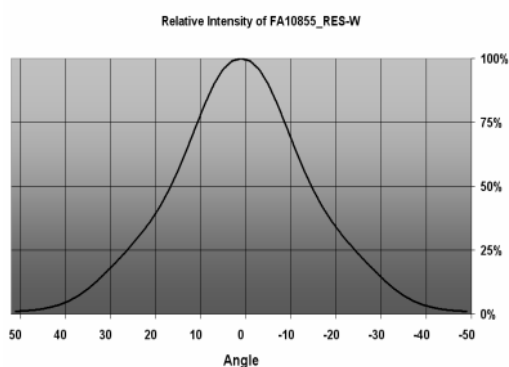


© Ledil Oy – PRELIMINARY - Subject to change without prior notice

RES-O



RES-W



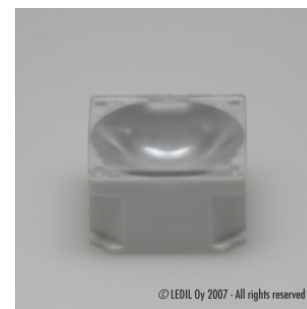
PHOTOS



RES-RS



RES-SS

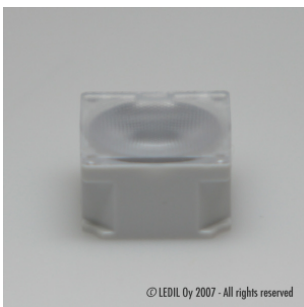


RES-D

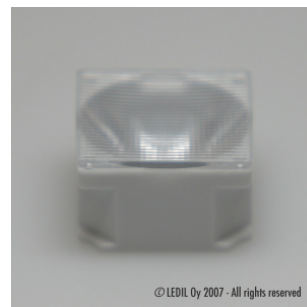
© Ledil Oy – PRELIMINARY - Subject to change without prior notice



RES-M

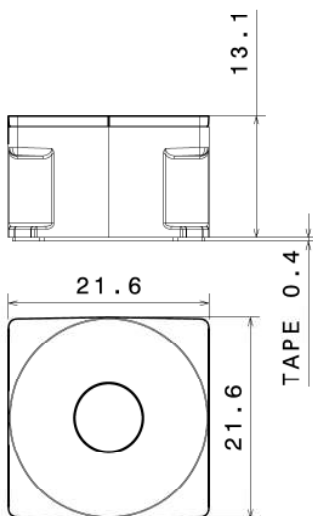
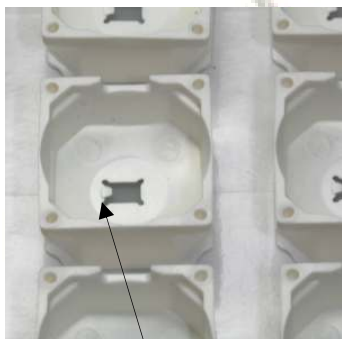


RES-W



RES-O

DIMENSIONS



12.5

NOTE: this lip prevents assembly of holder 180° in wrong direction

PACKAGING



RES lens holders are delivered on adhesive tape liner sheets, each sheet containing 60 lenses. Lenses are delivered separately. This is to ease the assembly: Rebel ceramic board has so low profile that a proper guidance without seeing is not possible.

SPECIAL VERSIONS

Special versions available on request, e.g. different lens holder colors or packaging sizes.



© Ledil Oy – PRELIMINARY - Subject to change without prior notice

Ledil Oy
Tehdaskatu 13
FIN-24100 SALO, Finland

www.ledil.com
email: ledil@ledil.com
FAX: +358-2-733 8001

2009-08-24